



CRUISE TRAIN
SEVEN STARS
IN KYUSHU

クルーズトレイン
ななつ星 in 九州

29th Term Autumn - Winter Journey Overview

Departure September 2026 ▶▶ February 2027

KYUSHU RAILWAY COMPANY

Application Procedure and Period

Website Applications for the Seven Stars in Kyushu Spring–Summer Journey (28th Term) will be accepted exclusively via the official website.



● **Application Period:**

From 10:00 AM (JST), Wednesday, April 1, 2026

Until 11:59 PM (JST), Thursday, April 30, 2026

• For full details, please visit the official Seven Stars in Kyushu website.

4 Days 3 Nights Journey - Accommodation for the second night

4D3N Unzen Journey

Ryotei Hanzuiryo

■ **Room type** Japanese & Western style room

Please note: The property and guest rooms include stairways.
Wheelchair access to rooms is not available.

■ **Dining Venue** Dinner and breakfast will be served in the privacy of your room.

Surrounded by lush greenery, this exceptional ryokan offers a secluded haven set within a sprawling 16,500 square meters (approximately 4 acres) Japanese garden. Here, you are invited to experience a world apart — a private sanctuary where each season paints a different scene, and every moment is steeped in quiet elegance. The garden, a masterpiece of traditional landscaping, soothes the soul and gently guides you toward a state of deep relaxation and bliss. In this refined setting, the ordinary fades away, allowing you to fully embrace the extraordinary.



4D3N Yufuin Journey

Yufuin Tamanoyu

■ **Room type** Japanese & Western style room

Please note: The property and guest rooms include stairways.

■ **Dining Venue** Dinner: served in restaurant Breakfast: served in restaurant

Established in 1953 as a retreat for a Zen temple, Yufuin Tamanoyu features small detached cottages scattered throughout a mixed woodland covering nearly 1 hectare. With spacious guest rooms, abundant hot springs, and gentle sunlight filtering through the trees, we invite you to enjoy a relaxing getaway in Yufuin.



Kameno Besso

■ **Room type** Japanese & Western style or Western style

Please note: The property and guest rooms include stairways.

■ **Dining Venue** Dinner: served in room Breakfast: served in room

Located on the shores of Lake Kinrin, this historic inn occupies a tranquil site spanning approximately 3.3 hectares. You will be surrounded by smooth, naturally flowing hot spring waters, the sounds of rustling leaves, and the songs of birds. Take your time to relax and savor the changing seasonal beauty of the garden.



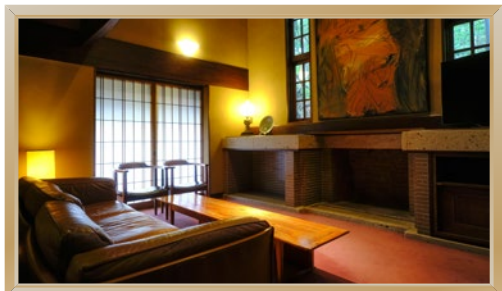
Sanso Murata

■ **Room type** Japanese & Western style room

Please note: The property and guest rooms include stairways.
Wheelchair access to rooms is not available.

■ **Dining Venue** Dinner: served in room Breakfast: served in restaurant

Away from the hustle and bustle of town situated at the quiet foot of Mount Yufu, this mountain lodge features entirely detached rooms. Designed with the concept of revitalizing traditional Japanese homes and featuring innovative, modern ideas, it offers a place to relax and unwind without being bound by the shackles of time.



4 Days / 3 Nights – Unzen Journey (September•October)

Experience Kyushu's rich earth, pure waters, and timeless traditions.

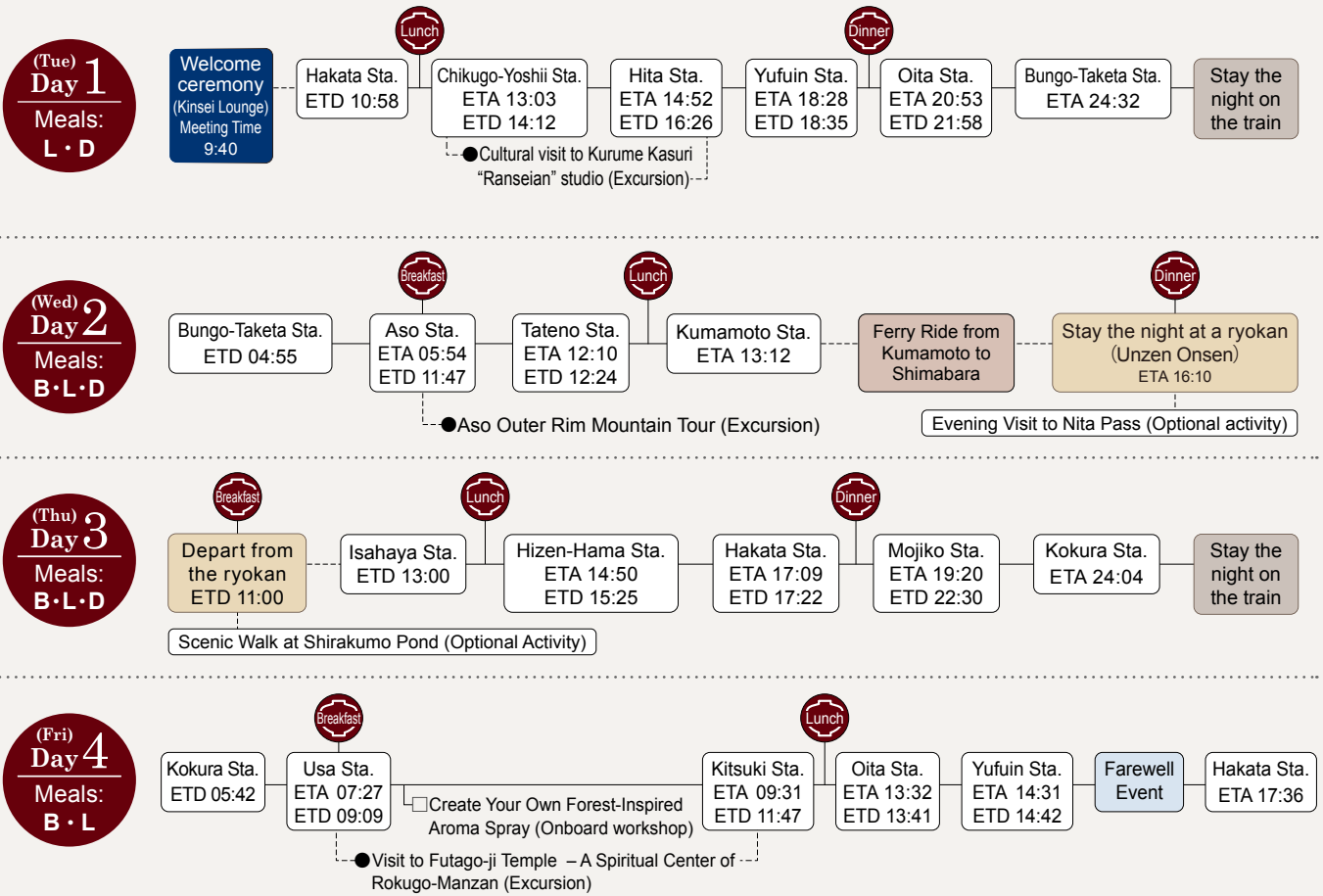
This is a four-day journey tracing the stories of Kyushu's nature, its abundant waters, and the people who live in harmony with them. From Kurume Kasuri in Fukuoka, where traditional indigo dyeing and weaving techniques are still practiced, to the grasslands of Aso—designated as a Globally Important Agricultural Heritage Site and preserved for over a thousand years.

Enjoy a serene moment in Unzen, Japan's first national park, once cherished by foreign visitors as a summer retreat. In Kunisaki, Oita Prefecture, you will visit Futago-ji Temple, a representative site of the Rokugo-Manzan culture with a history of approximately 1,300 years.

Feel the blessings of Kyushu's natural waters and landscapes, and enjoy a heart-enriching and inspiring journey.



- Stay the night on the train
- Stay the night at a ryokan
- Seven Stars in Kyushu
- Bus
- Kumamoto Ferry
- *The itinerary may be changed.



Departure Dates and Tour Prices Tuesday Departure - Friday Return

2026 **September** 1st, 8th **October** 13th

Suite Categories on Seven Stars in Kyushu (Day 1 and 3)	Accommodation (Day 2)		Tour Price (Per Guest)	
	Accommodation Name	Room Types	Based on Double Occupancy (Two guests per room)	Based on Single Occupancy (One guest per room)
Suite	Ryotei Hanzuiryo	Two-Story Japanese-Western Style Room	¥1,350,000	¥1,950,000
DX Suite B		Japanese-Western Style Room	¥1,700,000	¥2,650,000
DX Suite A			¥1,850,000	¥2,850,000

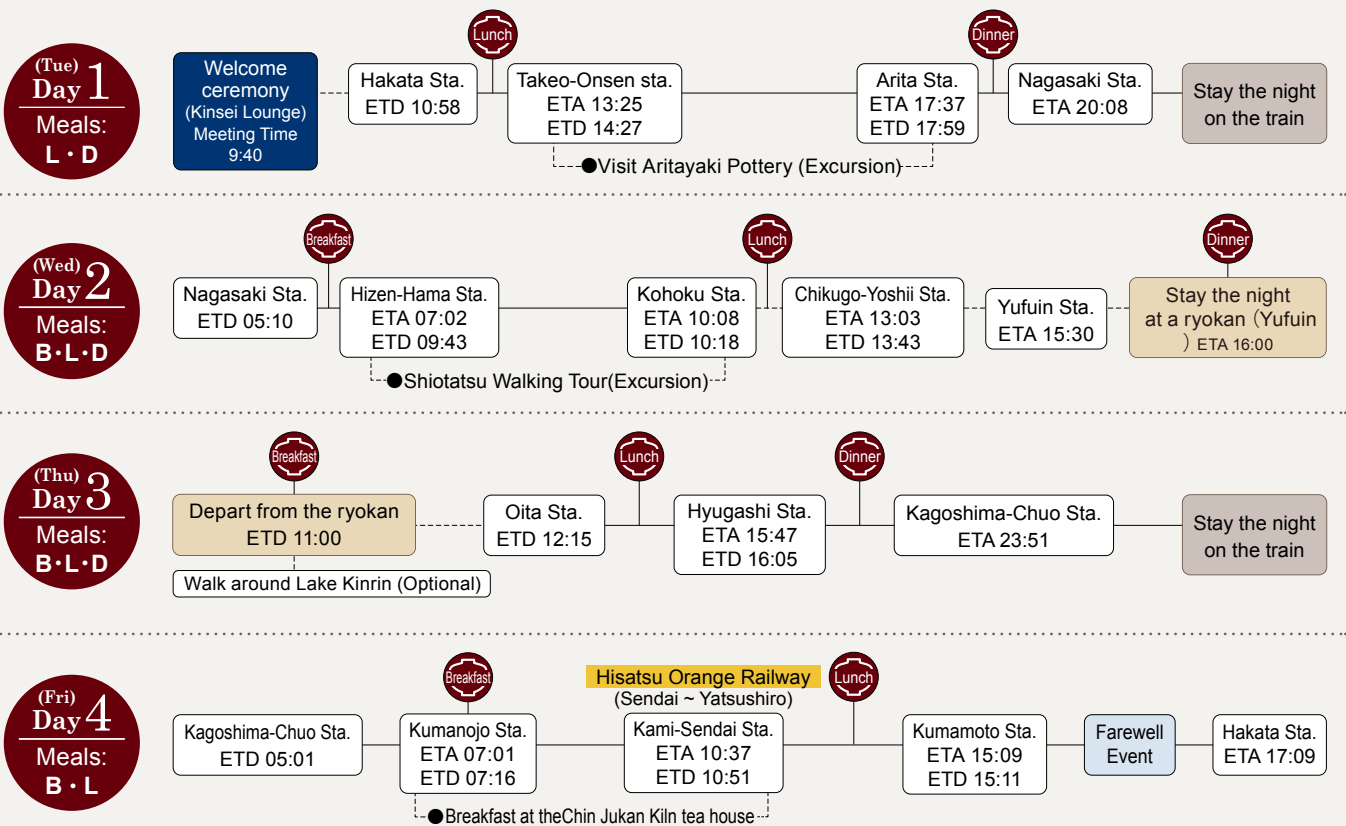
*[Applicable to both 4D3N and 2D1N journeys] Please also refer to the general information shared across all itineraries.
 Note: The panoramic observation window in the DX Suite Type A offers exclusive rear-facing views during select segments of the journey when the suite car is positioned at the end of the train. Please be aware that, depending on the direction of travel, forward-facing views may be partially obstructed by the locomotive.
 The train schedule listed is subject to change.

4 Days / 3 Nights – Yufuin Journey (November~February)

A journey to discover the history of an industry that began with Arita ware and meet the artisans shaping its future.

This is a four-day journey following a historic highway in Kyushu, steeped in over 400 years of history. These roads are a physical record of time itself - places where people, goods, and skills have crossed paths, fostering culture and industry. We hope you'll appreciate how the stories of the past connect to our lives today.

Along the way, we'll also visit the workshops that have developed in unison with the highway. In Arita, Saga Prefecture, you'll get to experience Arita ware, and in Kagoshima, you'll visit the Chin Jukan Kiln. These excursions will give you a tangible feel for how Kyushu's industry and culture have been shaped by the connections forged along the way. Over the course, stroll along streets steeped in history and culture, enjoy heartwarming interactions with the local people, and discover the endless charms of Kyushu.



Departure Dates and Tour Prices Tuesday Departure - Friday Return

2026 **November** 10th, 17th **December** 8th **January** 12th, 26th **February** 16th

Suite Categories on Seven Stars in Kyushu (Day 1 and 3)	Accommodation (Day 2)		Tour Price (Per Guest)	
	Accommodation Name	Room Types	Based on Double Occupancy (Two guests per room)	Based on Single Occupancy (One guest per room)
Suite	Kamenoi Bessou	Western-style or Japanese & Western style	¥1,350,000	¥1,950,000
	Sansou Murata	Japanese & Western style		
	Yufuin Tamanoyu	Japanese & Western style		
DX Suite B	Sansou Murata	Japanese & Western style	¥1,700,000	¥2,650,000
DX Suite A	Kamenoi Bessou	Japanese & Western style	¥1,850,000	¥2,850,000

* [Applicable to both 4D3N and 2D1N journeys] Please also refer to the general information shared across all itineraries.
Note: The panoramic observation window in the DX Suite Type A offers exclusive rear-facing views during select segments of the journey when the suite car is positioned at the end of the train. Please be aware that, depending on the direction of travel, forward-facing views may be partially obstructed by the locomotive.
The train schedule listed is subject to change.

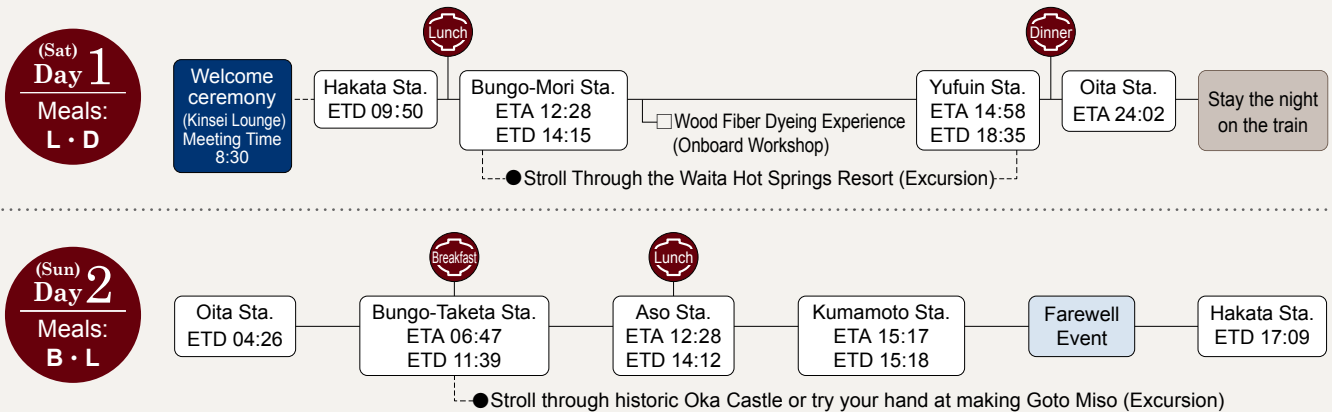
2 Days / 1 Night – Waita Journey (September~February)

A journey to discover the teachings that sustained the people of the Oka Domain and their way of life in harmony with nature's power.



Stay the night on the train
 Seven Stars in Kyushu
 *The itinerary may be changed.

Beyond the rising steam throbs the beating heart of the earth. This excursion will take you on a two-day journey to discover the inexhaustible geothermal resources of Kyushu. Traveling along the Kyudai Main Line and the Hohi Main Line, with the rolling mountains passing by the train window, we'll head toward the land of Waita, where steam billows into the sky. Learn why hot springs continue to flow and discover the wisdom of living in harmony with nature's power. In Taketa, Oita Prefecture, as we trace the stone walls of Oka Castle and the vestiges of the castle town, you'll encounter the "Myogakun" - a set of teachings that lifted the health and spirits of the people of that era. Enjoy a journey where you'll encounter the power of nature, ancient wisdom, and the people who live there.



Departure Dates and Tour Prices Saturday Departure - Sunday Return

2026 **September** 5th, 19th **October** 3rd, 10th, 31st **November** 21st **December** 12th, 26th
 2027 **January** 9th, 16th, 30th **February** 6th, 27th

Suite Categories on Seven Stars in Kyushu	Tour Price (Per Guest)	
	Based on Double Occupancy (Two guests per room)	Based on Single Occupancy (One guest per room)
Suite	¥700,000	¥1,000,000
DX Suite B	¥850,000	¥1,500,000
DX Suite A	¥950,000	¥1,600,000

Note: The panoramic observation window in the DX Suite Type A offers exclusive rear-facing views during select segments of the journey when the suite car is positioned at the end of the train. Please be aware that, depending on the direction of travel, forward-facing views may be partially obstructed by the locomotive. The train schedule listed is subject to change.

General Information – Applicable to 2D1N and 4D3N Journey

- Departure / Arrival station : Hakata Station
- Minimum Number of Participants : 16 guests
- Participation : Limited to guests aged 12 and above
- Tour Escort : No tour conductor will accompany the journey. Onboard, Seven Stars in Kyushu crew members will assist you throughout your trip. For off-train excursions, either crew members or local guides will accompany guests.
- Bus Operator : JR Kyushu Bus Co., Ltd., Unzen Kanko Co., Ltd. or Shimahan Kanko Co., Ltd. (Unzen Journey), Tsuno Unso Co., Ltd. (Waita Journey) Please note: Certain segments may be operated by taxi.
- Accommodation : **4 Days / 3 Nights Journey** Night 1 & Night 3 – Onboard Seven Stars in Kyushu, Night 2 – Offboard accommodation
2 Days / 1 Night Journey Night 1 – Onboard Seven Stars in Kyushu
- Additional Notes : *Specific room assignments aboard Seven Stars in Kyushu cannot be guaranteed. Please note that you may be assigned to a wheelchair-accessible room.
 *Excursions and walking tours listed in the itinerary are optional. (Some activities may require advance reservation for interested guests.)
 *The Farewell Event is held onboard Seven Stars in Kyushu on the final day of your journey.
- Legend : ● Excursion (off-train sightseeing) □ Onboard Workshop
 ————— Seven Stars in Kyushu - - - - - Other modes of transportation

Terms of use Important information - please read before making an application

Application

- Participants will be drawn by lottery in the case that applications exceed the amount of available space.
- All applicants must be over 12 years of age.
- Please contact the Cruise Train Tour Desk for further details about the application.

Fares

- The fare includes all rail, bus and other transportation costs/fares incurred during the specified itinerary, as well as on-board service costs (except for some facilities), tour bus costs, all meal costs, all beverage costs (except for vintage alcoholic beverages), sightseeing costs, and for the 4 Days 3 Nights journey accommodation costs, taxes and service charges at the accommodation facility designated by the Company. However, transportation costs to and from the stars and finish point, cleaning costs, telephone costs, additional meal and beverage costs, and other miscellaneous expenses of a personal nature as well as the associated tax and service charges are not included. Also, injury and/or illness related expense, and excess baggage charges (over the stipulated limitation) are not included.
- The fare quoted is for one passenger, and this amount changes depending on if one or two passengers share one room. Please see the fare chart for detail.

Passenger rooms

- Please be aware that due to overbooking some room types on the train and accommodation facility (4 Days 3 Nights journey only) may be not available.
- It is not possible to share rooms with other passengers.

Cancellation etc.

- Applications for cancellations and or changes to one's itinerary are only permitted if received during business hours of the Cruise Train Tour Desk.
- Changes in departure date, room type or journey will involve having to cancel the passenger reservation, and depending on the timing of the cancellation this will incur cancellation charges. Please be aware that in some cases such as full booking, rebooking may not be possible.

Other points

- Please be aware that the content and/or time of the stated tours, and events are subject to change without notice.
- All photos in this brochure are images.
- Information contained in this brochure is subject to change or cancellation.
- After departure it is not possible to claim a partial refund for unused portions of the journey due to the passengers request (JR tickets, bus and other means of transportation, accommodation costs, meals etc).
- It is not possible to apply discounts of any kind to the journey.
- Please do not on-sell tickets to third parties through such means as internet auctions. If such on-selling actions are discovered, the travel contract may be cancelled.
- Taking photographs or recording video of other passengers and Seven Stars staff and crew members without permissions is strictly prohibited due to a violation of portrait rights.
- Please be aware that the contents (including events and meal contents) of the journey introduced in non-official media such as magazines and blogs may differ from the actual content offered.

Please read the following important information before making an application.

[Travel Conditions Document (Excerpt)]

■ Agent-Organized Tour Contract

This tour is planned, solicited, and implemented by the Kyushu Railway Company (3-25-21 Hakataekimae, Hakata-ku, Fukuoka; Travel Agent License Number Registered at Tourism Agency: 965) (hereinafter referred to as "the Company"). A traveler participating in this tour shall conclude an Agent-Organized Tour Contract (hereinafter referred to as the "Travel Contract") with the Company. The contents and conditions of the Travel Contract shall include the conditions described for each course, the following terms and conditions, the final documents to be delivered prior to departure, and the Agent-Organized Tour section of the travel agent contract of the Company.

■ Traveler's application and conclusion of Travel Contract

- (1) A Traveler needs to fill in a travel application form designated by the Company and submit it to the Company with the application fee or the full amount of the travel fee. The application fee shall be treated as all or part of a "Travel Fee," a "Cancellation Charge," and a "Penalty," respectively.
- (2) The Company shall accept reservations for a Travel Contract by telephone, postal mail, facsimile, Internet or other means of communication. In this case, the contract is not in effect as of the acceptance of the reservation. The Traveler is required to submit an application form and the application fee to the Company within 7 days from the day following the one on which the Company notifies the Traveler about its acceptance of the reservation.
- (3) The Travel Contract shall be deemed to be put into effect when the Company agrees to the conclusion of the contract and receives the Traveler's application fee stipulated in (1) of this article.

Application fee (per person)	20% of the travel fee
------------------------------	-----------------------

■ Travel Contract Cancellation Initiated by Traveler

A Traveler may cancel a Travel Contract at any time by paying a cancellation charge stipulated in the following table.

Date of cancellation of the Travel Contract	Cancellation charge
● If calculated from the date preceding the date of commencement of the travel	Travel with accommodation
① Cancellation on or before the 21st day	None
② Cancellation on or after the 20th day (excluding ③—⑦ below)	20% of the travel fee
③ Cancellation on or after the 7th day (excluding ④—⑦ below)	30% of the travel fee
④ Cancellation on the day preceding the commencement date of the travel	40% of the travel fee
⑤ Cancellation on the date of commencement of the travel	50% of the travel fee
⑥ Not participating in the travel without notification	100% of the travel fee
⑦ Cancellation after commencement of the travel	100% of the travel fee

■ Items included in Travel fee

Fares and charges applicable to transportation facilities identified in the itinerary, accommodation expenses, meal expenses, beverage expenses (some exceptions), and sightseeing fees (admission fees and remuneration for travel guides, etc.), and the relevant consumption and other taxes. These expense shall not be refunded to the Traveler even if any portions of the services are not used due to the Traveler's reasons.

■ Special Compensations

Whether the company is deemed liable, if the Traveler suffers certain damage on your life, physical body, or baggage, due to abrupt and incidental external causes taking place during the participation in an Agent-Organized Tour, the Traveler is entitled to the following special compensations in accordance with the provisions on special compensations set forth in the terms and conditions for travel services stipulated by the Company (in Agent-Organized Tour Contract); fifteen million (15,000,000) yen as a compensation for death, twenty thousand (20,000) yen to two hundred thousand (200,000) yen as consolatory money for hospitalization, depending on the number of required cases of hospitalization, and ten thousand (10,000) yen to fifty thousand (50,000) yen as consolatory money for hospital visits, depending on the number of actual hospital visits made. The damage compensations for the Traveler's personal belongings shall be the maximum of one hundred and fifty thousand (150,000) yen per traveler. However, the maximum compensation for any single item or a pair of items shall be one hundred thousand (100,000) yen.

■ Travel Conditions applied to a Traveler concluding a Travel Contract with a Communication Contract
The Company may accept a travel application through "telephone, mail, facsimile, or other communication means" from a card member of a credit card company (hereinafter referred to as "Card Member"), affiliated with the Company (hereinafter referred to as "Affiliated Company") on the condition of "accepting payments of Travel Fees without the Card Member's signature" on the prescribed payment slip. (Hereinafter referred to as "Communication Contract.")

- (1) The Communication Contract shall also be governed by the "Agent-Organized Tour Contract as stipulated in the Terms and Conditions of Travel Contract" of the Company.
- (2) The "Card Use Day" in this article shall mean the date on which the Card Member and the Company should pay the travel fees, etc. or settle the refund debts in accordance with the Travel Contract.
- (3) In application for a Communication Contract, the Card Member shall provide the Company with the applicable "title of the Agent-Organized Tour Contract," "Departure Date," "Membership Number," and "Card Expiration Date," etc.
- (4) The Travel Contract with a Communication Contract shall come into effect at the time notice that the Company agrees to accept the application has reached the Traveler.
- (5) In case of intending to conclude a Communication Contract, if the Traveler is unable to settle his/her debts relating to the travel fee, etc., in whole or in part, in accordance with the credit card membership rules of the Affiliated Company, for such reasons as the Traveler's credit card being invalid, etc., the Company may not agree to conclude a Travel Contract.

■ Procurement of domestic travel insurance

If a Traveler is injured during the travel, significant amounts of expenses may incur for medical treatments and transportations, etc. Furthermore, in the case of an accident, it may become quite difficult to seek damage compensations or recover other compensations from the responsible parties. To be properly insured against these situations, the Traveler is recommended to procure domestic travel insurances for covering sufficient amounts. For information about domestic travel insurance, please contact any sales personnel at the outlet in which you have made your travel application.

■ Change in Traveler

- (1) A Traveler may assign your position under the Travel Contract to a third party by obtaining the Company's approval. In this case, you need to fill in a form designated by the Company, and submit it to the Company. For this change, you are required to pay to the Company ten thousand (10,000) yen for the changes. However, a case in which all members using a single room are to be changed shall be deemed to be cancellation of the contract. Furthermore, no change in travelers shall be accepted after the commencement of travel.
- (2) The assignment of the Traveler's contractual status under the Travel Contract shall take effect at the time when it is approved by the Company. After the assignment, an assignee of the Traveler's status under the Travel Contract shall succeed to all rights and duties applicable to the Traveler under the Travel Contract. The Company may decline the change request mentioned above.

■ Handling of Personal Information

The Company shall use the personal information presented in the application form submitted at application for the tour for the purpose of communication with the Traveler, and to the extent necessary for making arrangements for services to be provided by transportation and accommodation facilities to be used in the travel to which the Traveler has applied, and for ensuring the receipts of these services.

※ In addition, the personal information may be used by the Company and the outlet for (1) providing information on products, services and campaigns of the Company and other companies affiliated with Company, (2) requesting Travelers to present opinions, etc. after travel, (3) requesting responses to the Company questionnaires, (4) providing special services, and (5) compilation of statistical date.

■ Reference Date for Travel Conditions

These travel conditions shall be based on those effective as of March 1, 2026.

*Resale or assignment of rights through the Internet, etc. shall be strictly prohibited.

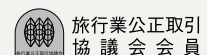
Travel Planning and Operation

Kyushu Railway Company

Travel Agent License Number Registered at

Tourism Agency: 965

3-25-21 Hakataekimae, Hakata-ku, Fukuoka-shi 812-8566 Japan



● For more information or inquiry

A Certified Travel Services Manager is a responsible person in charge of providing customers with travel-related services at a travel agency.

If you have any question about explanations provided by your service representative concerning this particular tour, please feel free to contact the following manager.

"Cruise Train" Tour Desk

E-mail: cruisetrain@jrkyushu.co.jp

■ Business hours: Monday, Thursday to Saturday 10:00 - 17:30 (JST)

■ Closed: Tuesday, Wednesday, Sunday and Japanese public holidays.

■ Certified Travel Supervisor: Miyuki Baba, Megumi Kamimigaki